

**HÜPPE**



# HÜPPEsphere

For a new era of bathroom architecture





**A pioneer since 1889 / The best choice for your shower**

HÜPPE combines 135 years of tradition and experience with a passion for innovation. As pioneers, we introduced shower enclosures in Europe in 1966. Since then, our ideas have provided important impetus for shower design. Many of our innovations have set permanent trends in the market and are now internationally recognised standards. Our forward-looking solutions continue to set standards in design, function, ease of installation and quality.

**HÜPPE quality / No compromises**

Our solutions stand for German engineering, high-quality materials and workmanship that reflects exceptional care, precision and a love of detail.

**HÜPPE solutions / Always a perfect fit**








Nothing is impossible for us. Our solutions are always tailored precisely to structural conditions and individual requirements – whether in terms of dimensions, features or colours, which we use to perfectly coat surfaces in our own paint shop.

**HÜPPE shower / Everything from a single source**

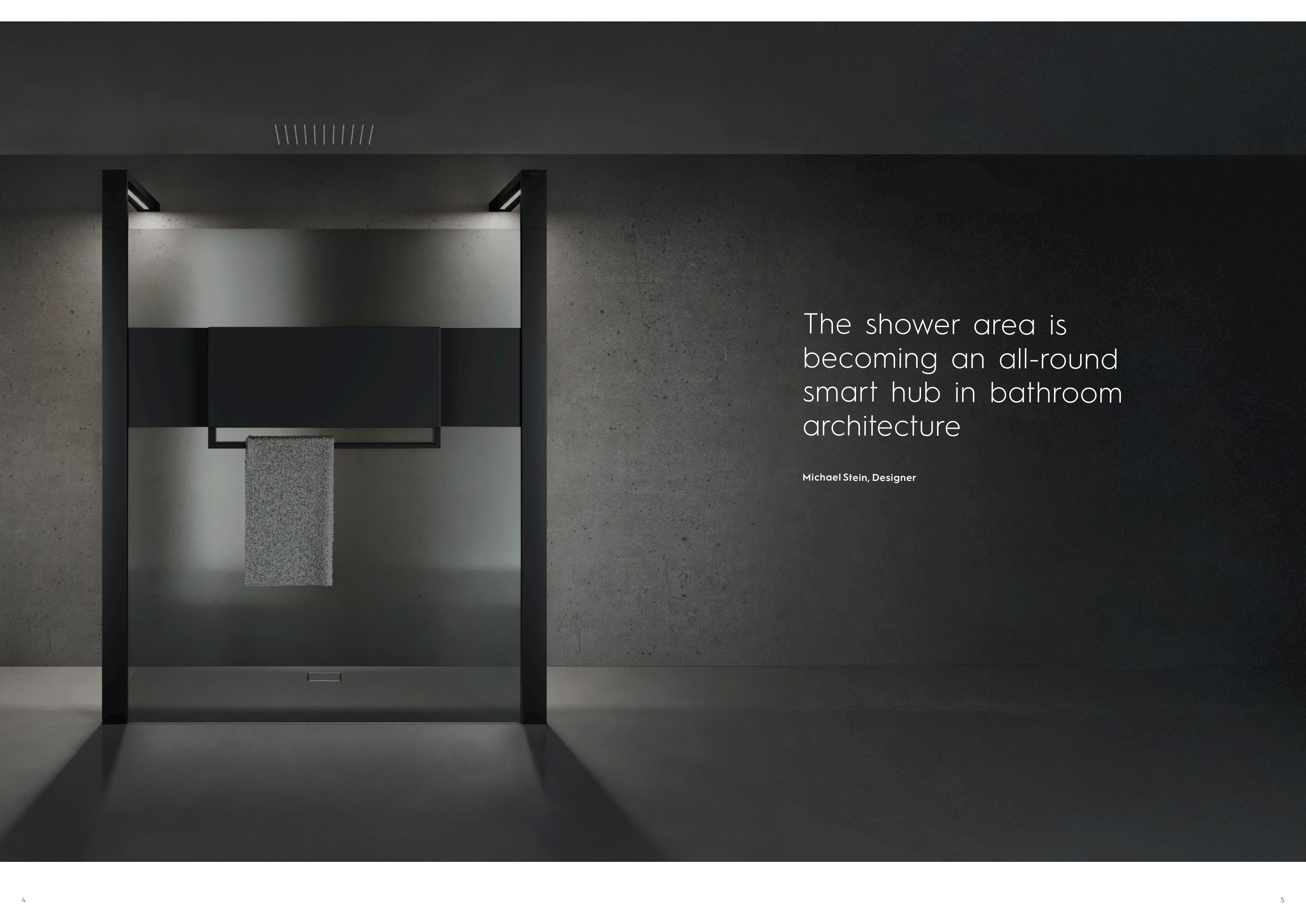
With our solutions, you can design your entire shower area – from shower enclosures and cubicles to back panels and shower accessories to shower trays, which we manufacture in our main factory.

**HÜPPE Service / Worthwhile**

Customer benefit is always our top priority. Our range of services therefore are not only limited to measurement and installation; we also take care of the needs of our customers and the users of our products throughout their entire customer journey.

1966	1987	1996	2007	2010	2024	2025
						
HÜPPE shower enclosure: The curtain falls	Partially framed shower enclosure	Anti-Plaque: Easy to clean	Keder system: Click instead of drill	Completely frameless shower enclosure	Probably the most minimalist gliding door in the World	Truly intelligent and smart all round





The shower area is becoming an all-round smart hub in bathroom architecture

Michael Stein, Designer

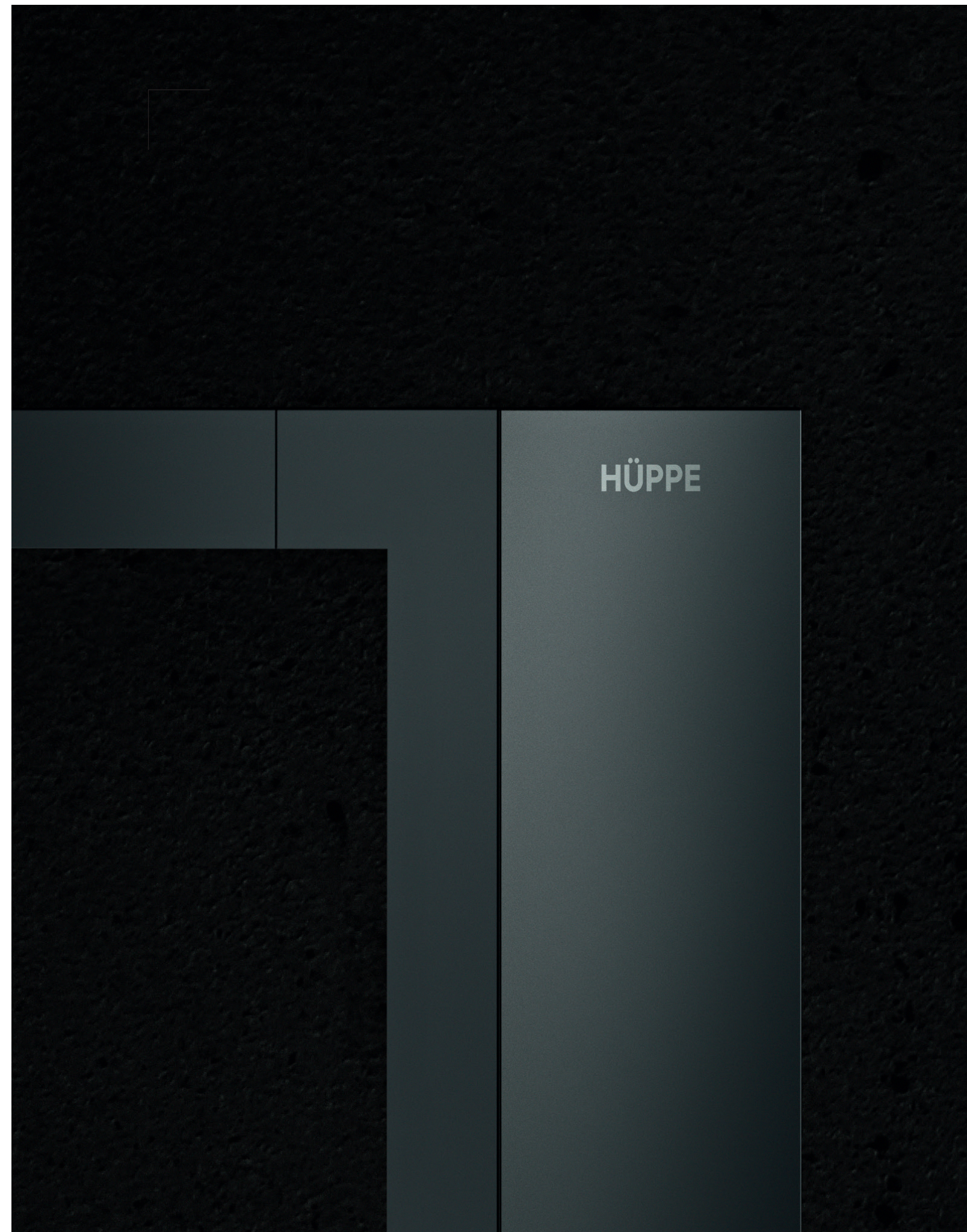
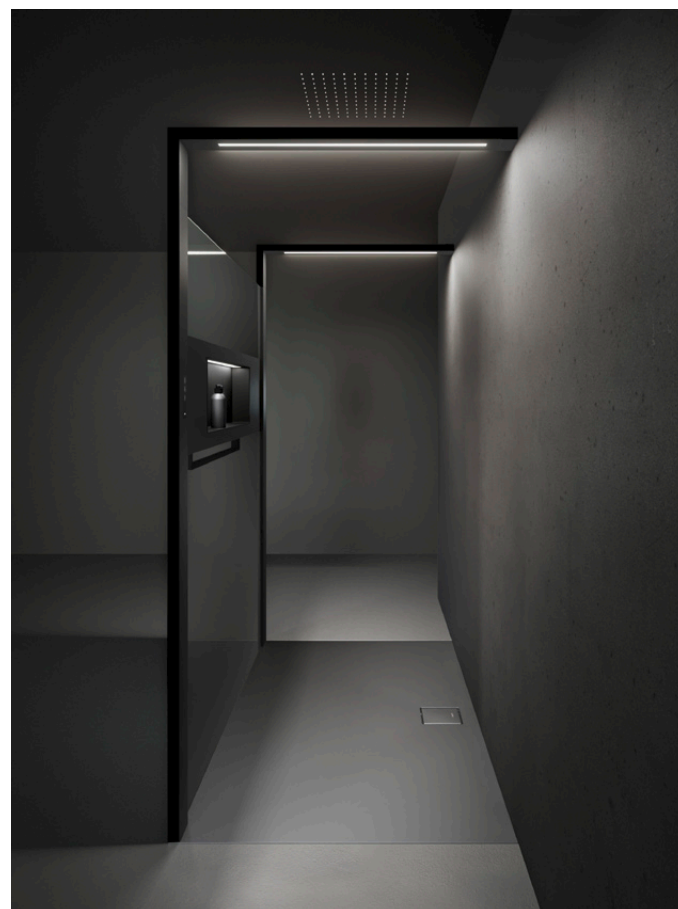


### A new dimension in showering

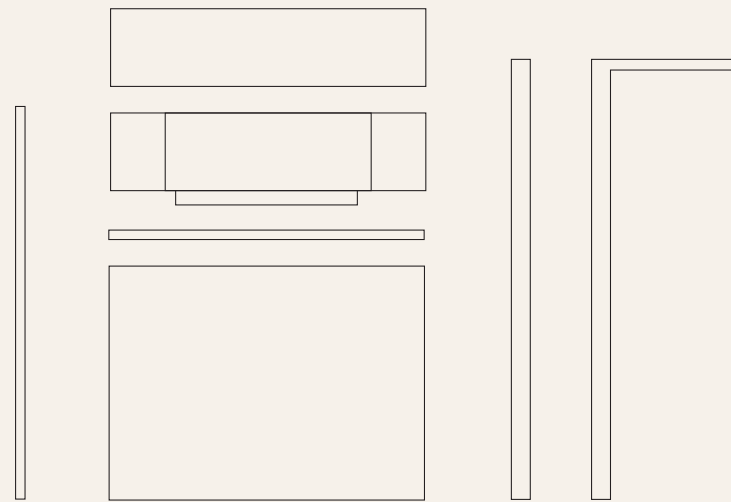
When Claus Hüppe introduced the shower enclosure to Europe in 1966, he ushered in a new era of bathroom design that continues to influence HÜPPE to this day - with innovations and inventions for the shower area that set standards in functionality, design and quality "Made in Germany".

In 2025, the shower enclosure specialist will take the next big step with HÜPPE Sphere: a brand new product category and the company's most significant innovation since 1966. It offers more intelligent functions, materials and modularity, a greater feel-good factor and more options for individual room design. HÜPPE Sphere transforms the shower into an integral design element in the home architecture, enabling completely new approaches to room layout.

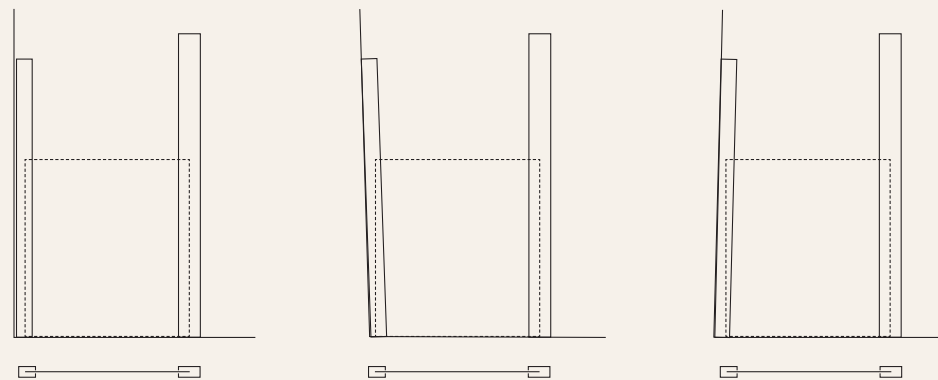
Discover the full range of smart solutions for tomorrow's interior design!



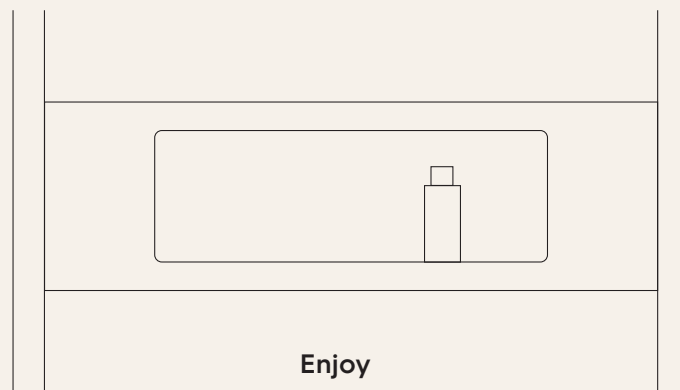




Plan



Build



Enjoy

## Plan

Uniquely tailored to the needs of architecture, interior design, real estate, and craftsmanship – and for anyone who wants their shower to become one of the most cherished spaces in their home. A place to unwind and enjoy the best moments of the day.

### Modular – Individual – Connected

Thanks to its modular design, the system is easy to understand and configure to suit your ideal shower solution. A wide variety of materials, finishes, colours, furniture fronts, and functional features unlock entirely new possibilities for personalised bathroom design. Integrated lighting – and soon, heating – enhance the sense of well-being in the shower area. Both functions are easily controlled via a touch display and can be connected to common smart home systems for added convenience.

## Build

### Efficient – Precise – Scalable

The installation modules are significantly smaller and lighter than traditional shower enclosures, which reduces both transport and installation costs. Adjustable profiles allow for compensation of uneven walls – up to six or even eight centimetres – eliminating the need for time-consuming custom fabrication in most cases. This shortens project timelines by weeks and ensures top-quality results, even for large-scale developments.

## Enjoy

### Attractive – Tactile – Comfortable

A distinctive combination of solid surface material, glass, and aluminium – paired with clean, linear design – creates a timelessly elegant aesthetic that transforms the bathroom into a lasting living space. Pleasant-to-the-touch surfaces and thoughtfully integrated lighting contribute to a warm, inviting atmosphere. Additional features such as heating, lighting, storage solutions, and built-in furniture complete the experience, turning your shower into a favourite place to relax and recharge.











### More interior design

With HÜPPE Sphere, the shower area becomes an integral design element in the architecture of the home, enabling completely new approaches to room layout.

# Space S

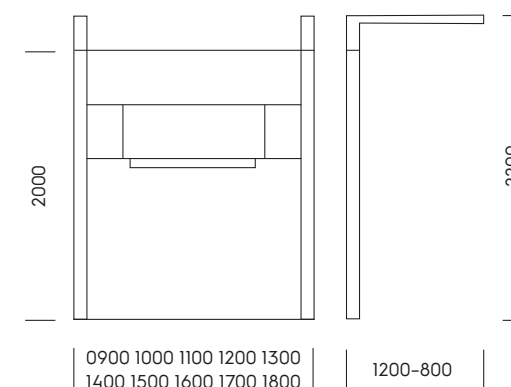


### Makes more of the space

The shower area is now the central element of modern bathroom design. After all, there is hardly anything else that symbolises the transformation of the bathroom from a purely functional, uniform wet room to an individual feel-good space as much as the shower – a development that HÜPPE has helped to shape since 1966 as a pioneer in shower enclosures with its innovations and over 135 years of experience as a room partitioning specialist.

HÜPPE Sphere now also emphasises the growing importance of the shower area in architectural terms. While conventional shower enclosures primarily serve to separate the wet from the dry areas of the bathroom, HÜPPE Sphere opens up a wide range of options for designing the space as part of the interior architecture – in line with individual furnishing styles and design preferences. HÜPPE Sphere is the modular system solution for getting more out of bathroom interior design and turning a wide variety of room concepts into reality.

This is made possible by a completely new frame profile design, integrated functions and the use of materials that offer an alternative to conventional glass. In fact, the striking, iconic L-shaped crossbar of HÜPPE Sphere marks the gateway to a new shower dimension, where the shower experience is determined not only by the water, but also to a large extent by the interior design and aesthetics of the room. This finally transforms the bathroom into a living space whose design and quality of stay are in no way inferior to other areas of our living environment.



HÜPPE Sphere is available in various dimensions. There are eight different standard lengths between 900 and 1.800 millimetres. The standard crossbar is supplied with a width of 1.200 millimetres; it can be shortened on site to a width of up to 800 millimetres. The height is 2.000 or 2.200 millimetres. Customised designs are available on request.

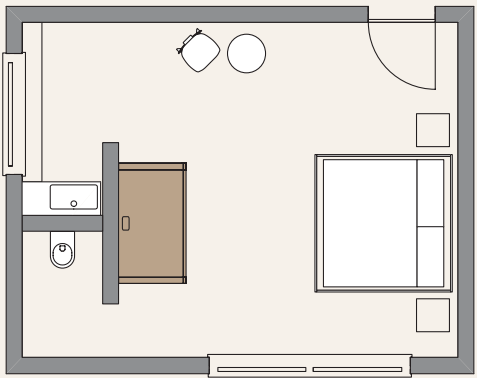


### Room layout

With HÜPPE Sphere, the shower area becomes an integral part of the interior design. The additional materiality and colour offered by HÜPPE Sphere help to give the room the desired atmosphere. By providing useful functions both inside and outside, the modular system means that the shower is no longer just a wet room, but a clever piece of furniture. HÜPPE Sphere thus opens up new approaches to room layout design – not only in the bathroom, but also where flowing transitions to other living areas are to be created. With the free-standing walk-through version with integrated HÜPPE Wallbox, you can create an island of well-being in any ambience that will attract everyone's attention.



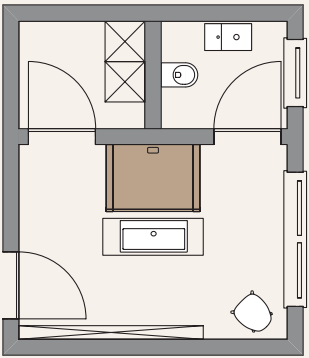
You can quickly and easily plan the ideal combination of modules for your project using the online configurator: [www.hueppe.com/en/new-era/configurator](http://www.hueppe.com/en/new-era/configurator)



**32,5 m<sup>2</sup>**

An attractive room divider when the bedroom and bathroom flow into one another

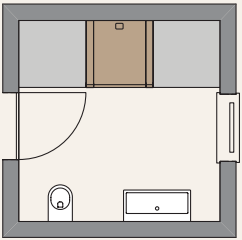
HÜPPE Sphere 1800 x 1000 mm



**12 + 3 m<sup>2</sup>**

As a modern island solution when the shower and washbasin form a single unit

HÜPPE Sphere 1400 x 1000 mm



**9 m<sup>2</sup>**

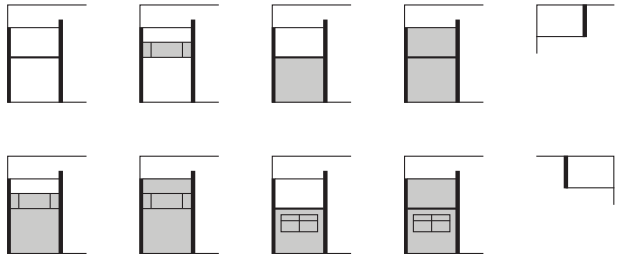
A feel-good oasis in the smallest of spaces, when the wellness shower replaces the bathtub

HÜPPE Sphere 1000 x 1000 mm

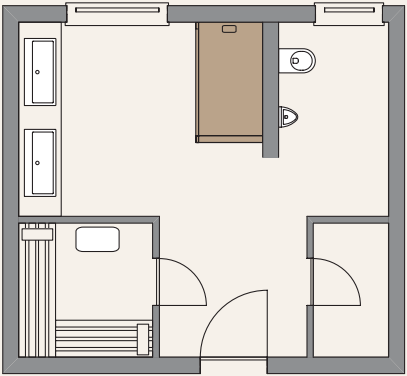


**Room atmosphere**

HÜPPE Sphere brings a materiality and colourfulness to the shower area that gives interior designers a wide range of additional design options. Whether the interior design is intended to radiate cosy warmth and comfort or rather express urban coolness and sober, functional purism, HÜPPE Sphere helps to create the desired room atmosphere. This allows a wide variety of room concepts to be realised, integrating the bathroom seamlessly into the architecture of the living space. The corner versions of HÜPPE Sphere are available with the entrance on the right or left. An LED lighting system can be integrated into the respective wall strip.



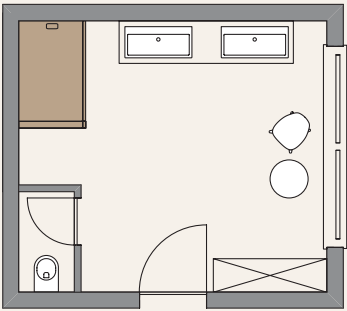
You can quickly and easily plan the ideal combination of modules for your project using the online configurator:  
[www.hueppe.com/en/new-era/configurator](http://www.hueppe.com/en/new-era/configurator)



**37,5 m<sup>2</sup>**

A cosy furnishing element for a comfortable atmosphere

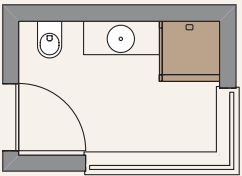
HÜPPE Sphere 1800 x 1000 mm



**17 m<sup>2</sup>**

Saves space when the shower and wash area are combined to form a smart ensemble for added comfort

HÜPPE Sphere 1600 x 1000 mm



**6 m<sup>2</sup>**

A stylish all-rounder for narrow bathrooms where compact functionality is required

HÜPPE Sphere 900 x 900 mm

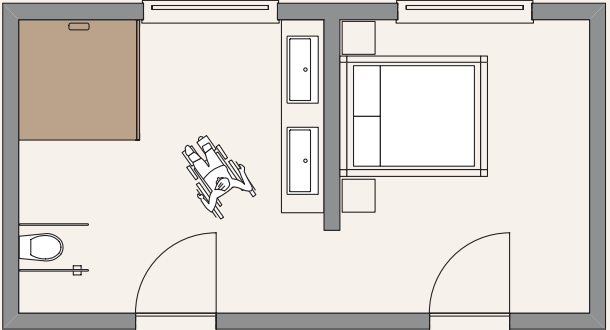


**Room architecture**

Thanks to the modular design of HÜPPE Sphere, a wide range of solutions in various dimensions can be created. The dream shower can be freely configured from glass and mineral material modules – depending on the degree of privacy desired – in different finishes, with various features and in colours that best harmonise with the style of the home. Depending on the structural situation and architectural specifications, HÜPPE Sphere can be used to create a range of different designs: from a spacious walk-in shower with ceiling connection for maximum freedom of movement to a compact shower enclosure for niche installation. The ceiling connection is the ideal alternative wherever the position of the windows does not allow for a solution with a cross bar.



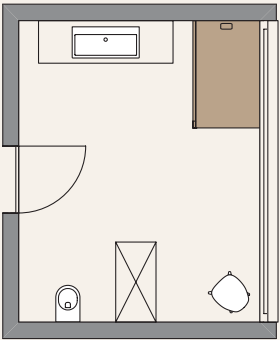
You can quickly and easily plan the ideal combination of modules for your project using the online configurator: [www.hueppe.com/en/new-era/configurator](http://www.hueppe.com/en/new-era/configurator)



**37,5 m<sup>2</sup>**

A spacious dream shower when the Easy Bathroom demands maximum freedom of movement

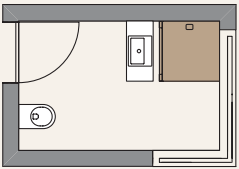
HÜPPE Sphere 1800 x 1800 mm



**16 m<sup>2</sup>**

As an exciting lookout when the shower is directly adjacent to the spacious window front

HÜPPE Sphere 1600 x 1000 mm



**5,5 m<sup>2</sup>**

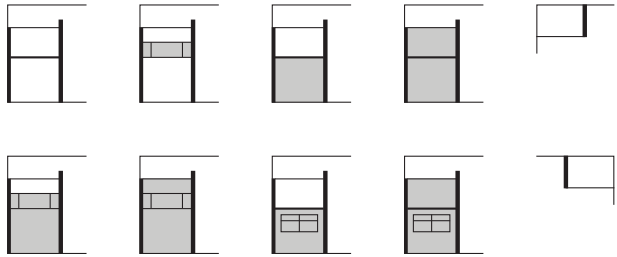
As a highlight in a compact bathroom with natural light, when the shower area is located below the window

HÜPPE Sphere 900 x 900 mm

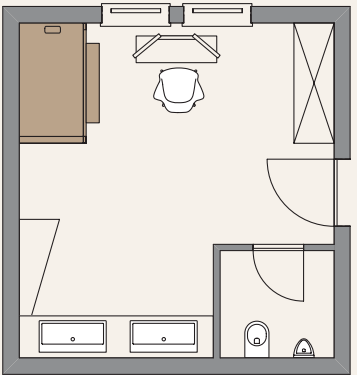


**Space efficiency**

Making the most of available space calls for intelligent storage solutions and furnishings with smart, added functionality. The mineral composite modules of the HÜPPE Sphere can optionally be fitted with a concealed shelf, providing valuable additional storage. Whether in a spacious bathroom – where cosmetics can be kept within easy reach of the adjoining vanity – or in a compact setting where space for a cabinet is limited, the system adapts effortlessly. In this way, HÜPPE Sphere meets the growing demand for micro-living solutions in urban environments, while also offering sophisticated options for modern residential architecture – be it single-family homes or high-end apartments that emphasise spacious, luxurious bathrooms.



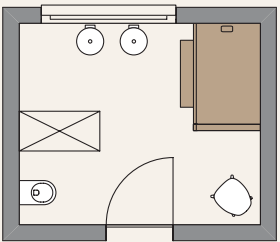
You can quickly and easily plan the ideal combination of modules for your project using the online configurator: [www.hueppe.com/en/new-era/configurator](http://www.hueppe.com/en/new-era/configurator)



**23,5 m<sup>2</sup>**

Intelligent furniture for when the most important items need to be within easy reach

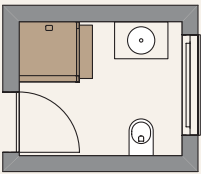
HÜPPE Sphere 1800 x 1000 mm



**11,5 m<sup>2</sup>**

As important storage space when the washbasin offers no opportunity to store utensils

HÜPPE Sphere 1600 x 1000 mm



**4,5 m<sup>2</sup>**

A compact unit for when micro living requires centralised functions in one place

HÜPPE Sphere 900 x 900 mm

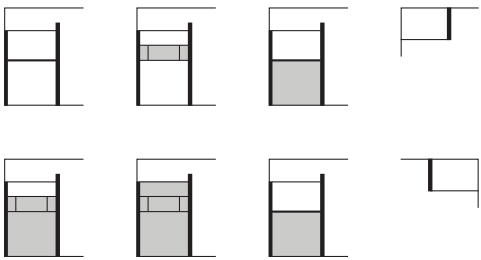


**Room divider**

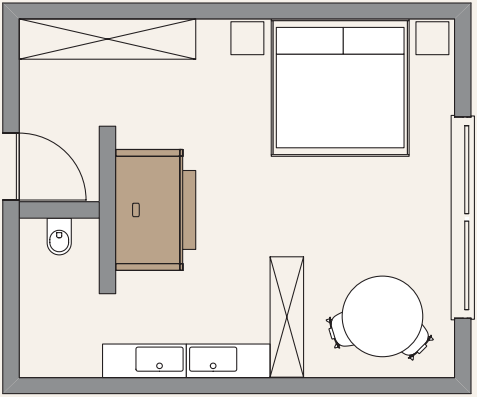
In modern hotel and residential construction, modular architecture is often used to make planning and implementation as efficient as possible. The floor plans, especially of bathrooms, are therefore largely similar. Here too, HÜPPE Sphere offers the possibility of dividing the bathroom into a private area for intimate personal care and hygiene and a shared area for socialising. In this way, the system solution transforms the shower area into a place of tranquillity and undisturbed retreat from the hustle and bustle of everyday life. At the same time, it opens up opportunities for encounters and interaction outside this area. HÜPPE Sphere thus meets the desire for more intimacy and privacy in the bathroom as well as the need for interaction and shared experiences.



A clever room divider when personal and shared areas in the bathroom need to be kept separate



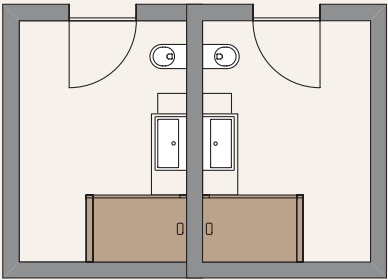
You can quickly and easily plan the ideal combination of modules for your project using the online configurator: [www.hueppe.com/en/new-era/configurator](http://www.hueppe.com/en/new-era/configurator)



**35 m²**

As a luxurious wellness temple when the hotel suite combines living, sleeping and showering in one room

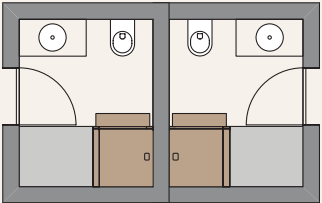
HÜPPE Sphere 1800 x 1000 mm



**9+9 m²**

As a compact shower and wash unit when all bathroom fixtures are arranged in a row

HÜPPE Sphere 1600 x 1000 mm



**5+5 m²**

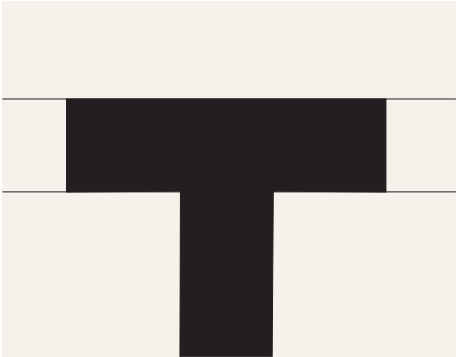
As a clever storage solution when space in a small bathroom needs to be used as efficiently as possible

HÜPPE Sphere 900 x 900 mm



**Public and semi-public spaces**

In places where many people come together, such as gyms, wellness centres, hotel spas or swimming pools, the need for intimacy and privacy is particularly pronounced when it comes to personal hygiene. HÜPPE Sphere offers solutions for this too, whether for shower areas, toilets or changing rooms in public or semi-public spaces. The big advantage: thanks to the modularity of the system, the planning effort is significantly reduced and separate partition walls are not required, ensuring quick implementation.



T instead of Γ:  
With the specially developed  
T-element, HÜPPE Sphere can  
be extended to the side.

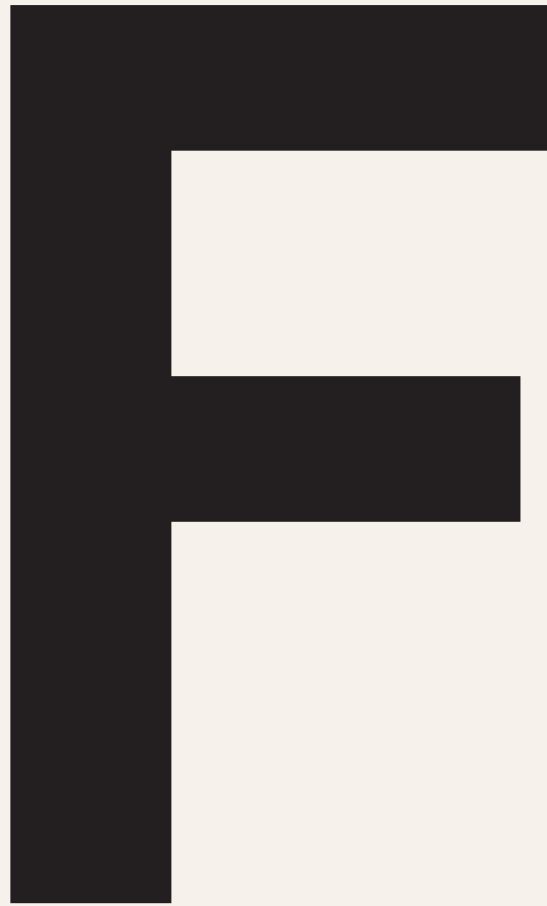




### More comfort

In everyday living, HÜPPE Sphere presents itself as a sophisticated furnishing element with a wide range of convenient functions integrated inside and outside – from accessories to lighting and heating to furniture.

# Function

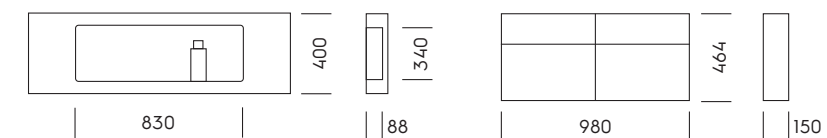


### Offers more flexible comfort

In everyday living, HÜPPE Sphere is a smart and sophisticated furnishing element that integrates a wide range of convenient functions and meets the highest standards of bathroom functionality. These include various accessories and storage systems, from towel rails and simple tablet holders to a generous, discreetly illuminated storage niche, the HÜPPE Wallbox, in which various shower accessories can be stored within easy reach, and a range of furniture and mirrors on the outside. Unlike conventional shower enclosures, the outside of HÜPPE Sphere can also be used to accommodate a wide variety of functional elements.

Optional integrated lighting systems, whose light intensity and colour can be controlled via several preset levels, ensure a pleasant atmosphere in the room. In future, an optional integrated heating function will also ensure that the shower area is always at a comfortable temperature. The light and heat are controlled via an intuitive touch display that is flush-mounted and water-protected in the frame. Even greater convenience is possible by integrating the light and heat control into common smart home systems via a binary IO interface.

With HÜPPE Sphere, you can flexibly determine which features enhance showering comfort and increase the quality of time spent in the bathroom according to your individual needs and wishes.



The HÜPPE Wallbox is available with a module length of 1.200 mm or more. Its 340 mm high and 88 mm deep niche measures 830 mm in length. It is available with or without lighting.

The optionally available 150 mm deep cabinet is set in a solid surface frame that is cast with the solid surface module. Its fronts are available in three standard colours.



**Light creates atmosphere**

Lighting plays a decisive role in bathroom design – not only in terms of aesthetics and design, but also from a psychological perspective. Lighting that mimics the natural course of daylight appeals to the senses and creates a room atmosphere that ensures additional well-being. That is why the LED lighting in HÜPPE Sphere can be continuously adjusted in terms of light intensity and colour, from cool daylight white (6.500 Kelvin) to a pleasant warm white (2.100 Kelvin).



Intuitive operation: light and, in future, heat can be controlled via a waterproof touch display flush-mounted in the frame. Optional integration into common smart home systems provides even greater convenience.



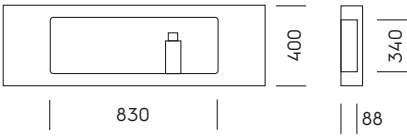
The crossbar and wall strip of the frame profile can be optionally equipped with LED lighting systems whose light intensity and colour can be varied.



Sophisticated storage space and convenient shelves

A tidy bathroom is essential for creating a calm and comfortable atmosphere. Intelligent storage solutions also maximise space efficiency and make even compact bathrooms appear spacious. With its optional wallbox module made of high-quality, solid-coloured solid surface material, HÜPPE Sphere integrates a generous, indirectly lit storage niche into the shower area without the need for complex drywall construction work. With a length of 830 millimetres, the HÜPPE Wallbox niche offers enough space to store all necessary shower accessories within easy reach.

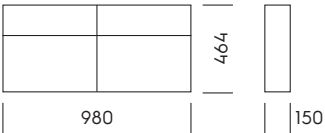
The HÜPPE Wallbox is made of high-quality, solid-coloured, lightweight solid surface material. It is available in matt black, taupe and white as standard. Optimised radii ensure that no water collects in the niche. The HÜPPE Wallbox is available with or without lighting.



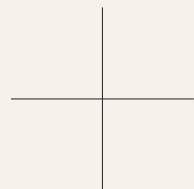
Tablet and towel rail: Even in the basic version, HÜPPE Sphere offers high-quality and practical storage accessories. The tablet made of solid surface is the same colour as the optional mineral material wall modules.



Freshened up: The solid surface modules from HÜPPE Sphere are optionally available on the outside with a 150 mm deep shelf, whose frame is moulded from solid surface together with the module. The two doors of the unit can be opened effortlessly thanks to soft-close hinges. The fronts are available in three colours as standard.







**More individuality**

The interplay of solid surface, glass and metal in a wide range of colours opens up additional options for designing the bathroom entirely according to personal preferences and in keeping with the interior design style. This is how individual living dreams come true.

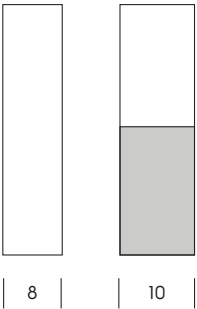
**Material**



**Opens up more design possibilities**

Unlike conventional shower enclosures, HÜPPE Sphere brings a materiality and colourfulness to the shower area that opens up additional possibilities for individual bathroom design. In a support system made of powder-coated aluminium profiles, HÜPPE Sphere combines innovative modules made of natural mineral material and glass. From completely closed partitions to partially transparent versions and pure real glass fronts, various combinations are possible – depending on how much privacy is desired.

The fact that the modules are available in high-quality mineral material in a range of colours is crucial for interior design and the overall effect. HÜPPE Sphere thus offers interior designers a whole new range of additional options for creating a harmonious atmosphere in keeping with the style of the furnishings and design preferences, or for adding exciting accents to the room with attractive eye-catchers. This is all the more true as the profiles of the support system are available in 220 RAL colours on request. This results in countless possibilities for designing the bathroom entirely according to personal preferences and making individual living dreams come true, especially as the glass modules are also available in different colours and glass types: HÜPPE Sphere thus becomes a strong expression of personal style.

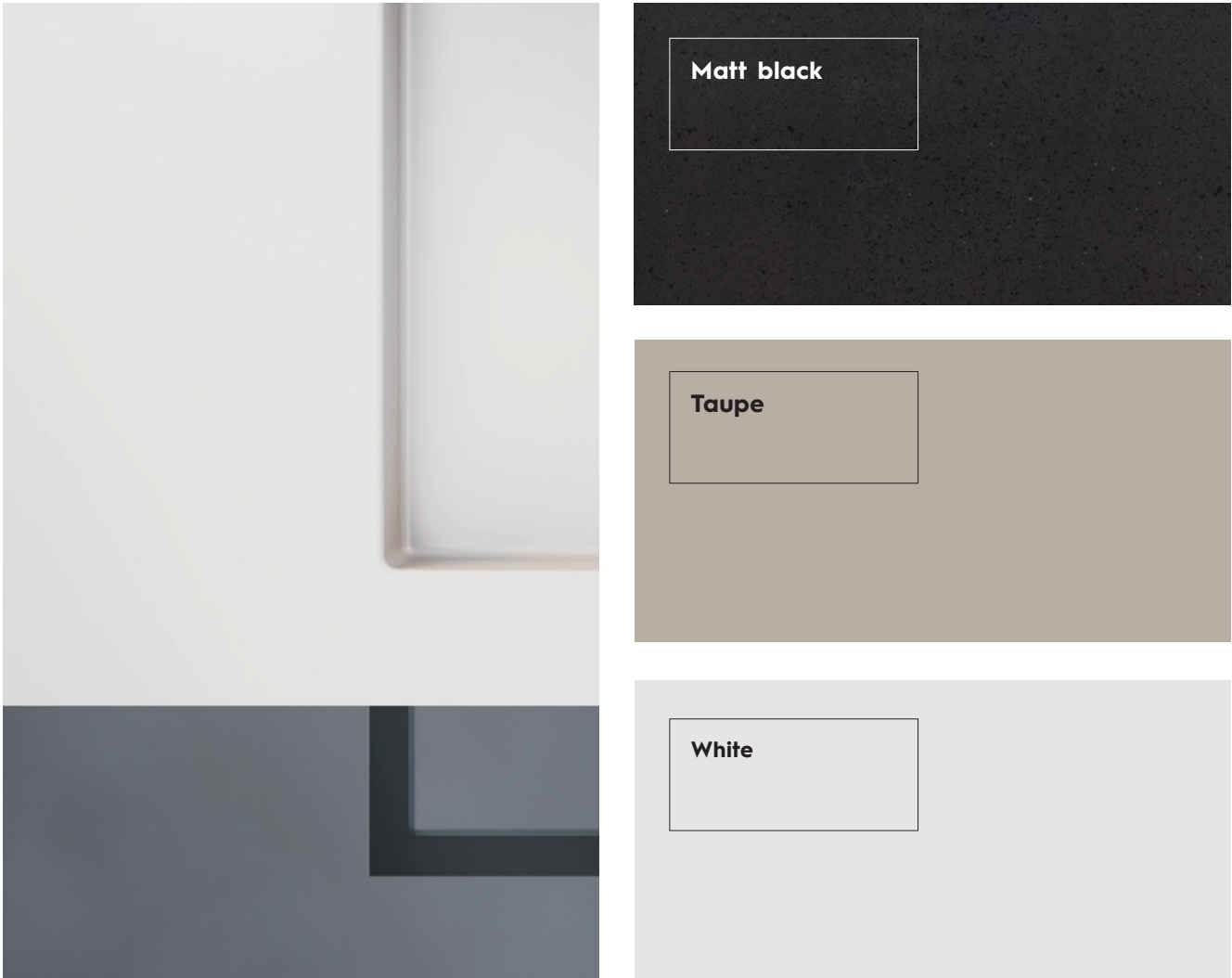


The glass thickness of the solid glass versions of HÜPPE Sphere is 8 millimetres. For models that combine glass and mineral material modules, it is 10 millimetres.



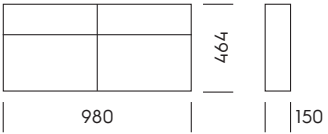
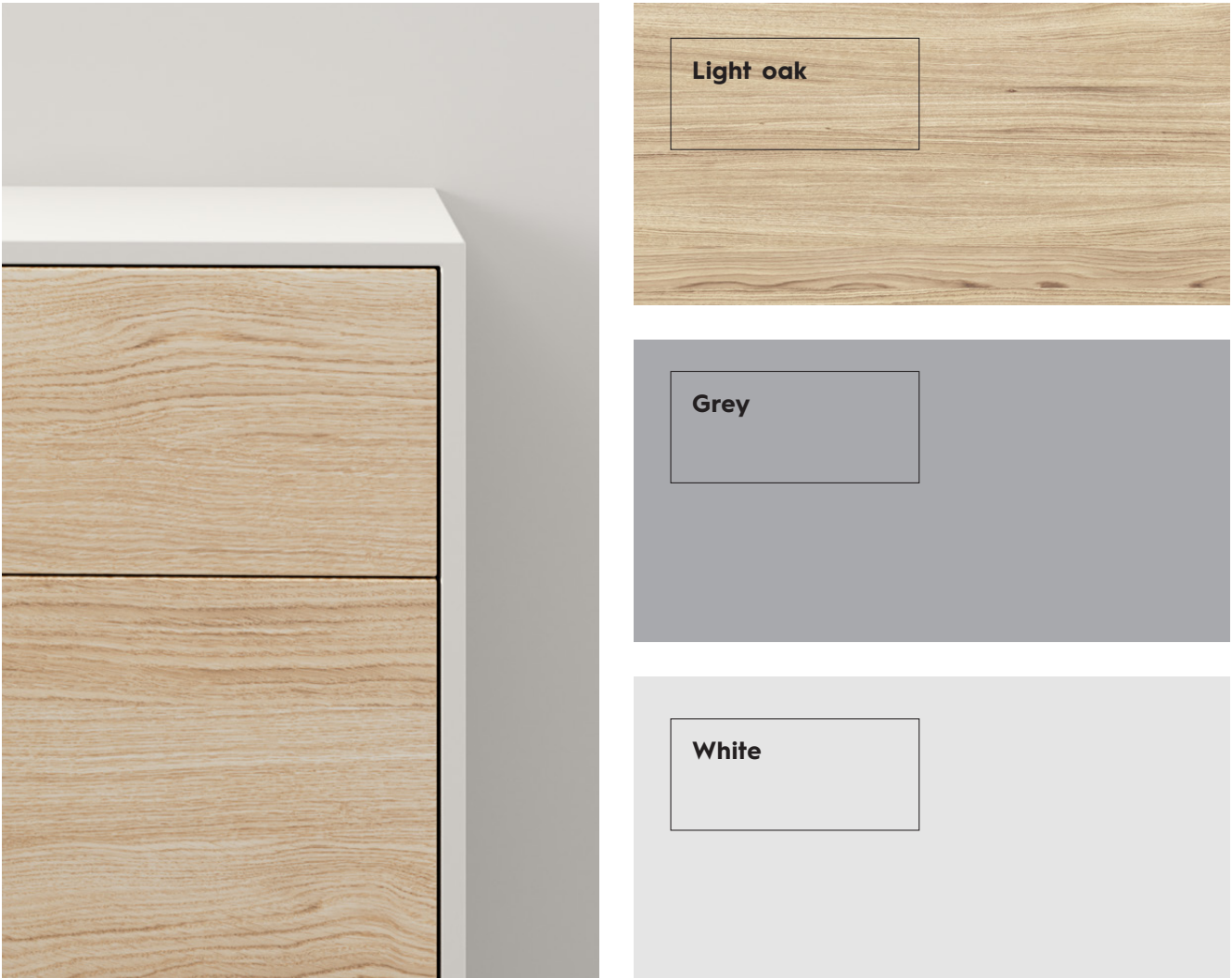
**A completely different material**

Until now, high-quality shower enclosures have primarily been made from two materials: glass and metal. HÜPPE Sphere adds solid surface to this list. This mineral material, which is made from natural mineral rock, colour pigments and acrylic, is characterised by its pleasant feel. Its particularly low weight makes it easy to transport and install. It is considered particularly hygienic and easy to clean. The solid-coloured material impresses with its impact and scratch resistance as well as its resistance to UV radiation, heat, moisture and chemicals. It is also considered comparatively environmentally and climate-friendly due to its low (CO2) footprint.



**Standard or custom**

For the standard versions of HÜPPE Sphere, the solid surface modules are initially available in the soft, timelessly elegant colours matt black, taupe and white. The fronts of the furniture that can be integrated into the outside of HÜPPE Sphere are also available in different finishes and colours: white, grey and light oak decor are standard. Other colour designs in all RAL colours are available on request.



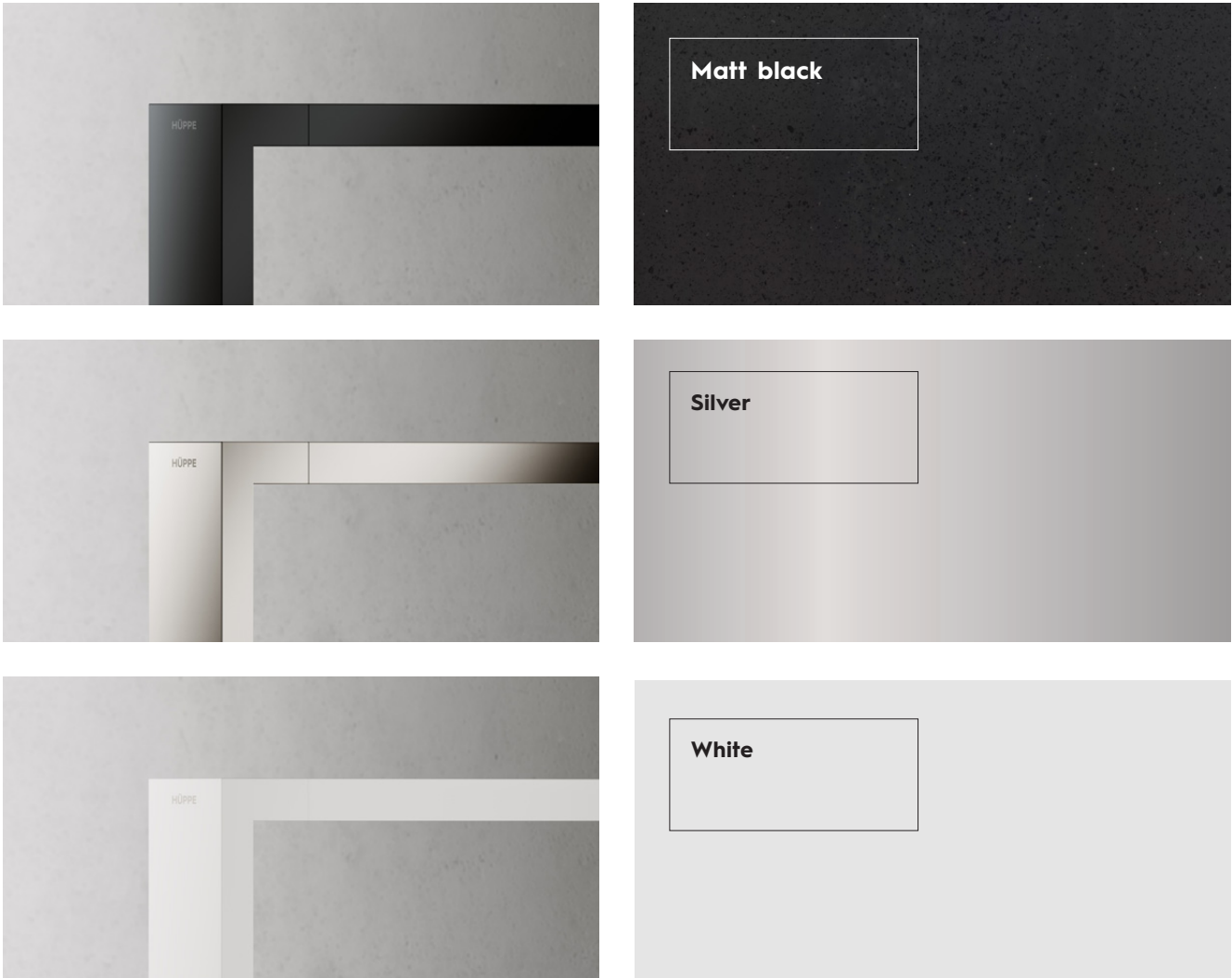
Other colour designs based on RAL INDIVIDUAL are available on request.





**A confident statement**

The striking crossbar of HÜPPE Sphere, with its distinctive design language, marks a departure from the strict minimalism that has made previous products almost invisible. This is further enhanced by the fact that the powder-coated frame profile made of high-quality anodised aluminium and the metal accessories can be coated in up to 220 RAL colours at the HÜPPE surface manufacturing facility – in the particularly popular matt black, white and silver shades as standard, and in bronze, black chrome, brass and stainless steel look.

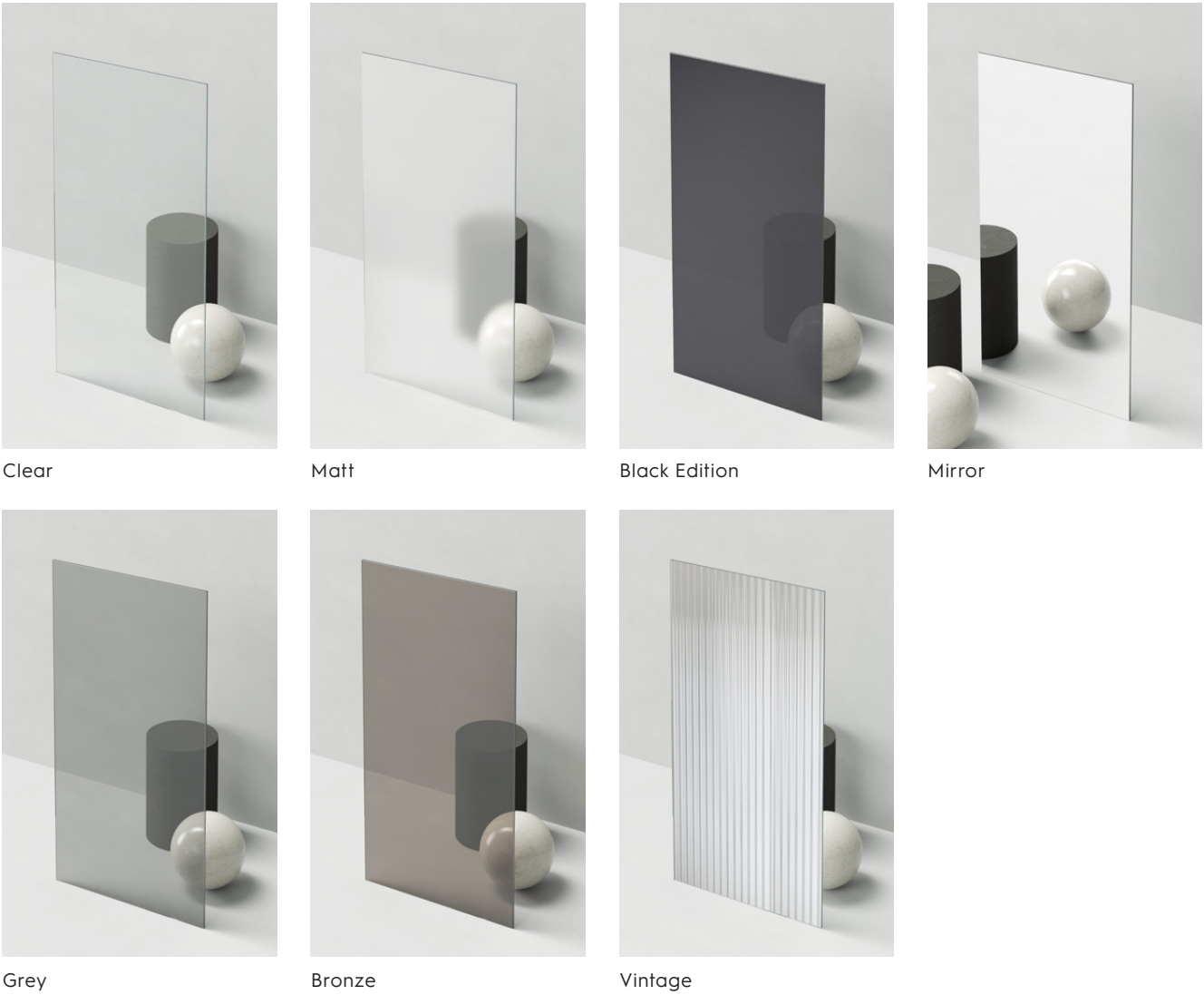


Other colour designs based on RAL INDIVIDUAL are available on request.



**Not all glass is the same**

For even more individuality in the bathroom, the eight or ten millimetre thick modules made of single-pane safety glass from HÜPPE Sphere can be finished in different colours and glass types – entirely according to personal style preferences and the desired degree of privacy: from clear glass for a modern, clean look to a satin finish for discreet elegance and coloured glass in seven different shades. The version with outward-facing mirrored glass opens up new possibilities and additional options for bathroom design.



A clean solution. All glass modules from HÜPPE Sphere are finished with the particularly easy-to-clean HÜPPE Original Anti-Plaque coating. This ensures that limescale and dirt particles do not accumulate on the glass.

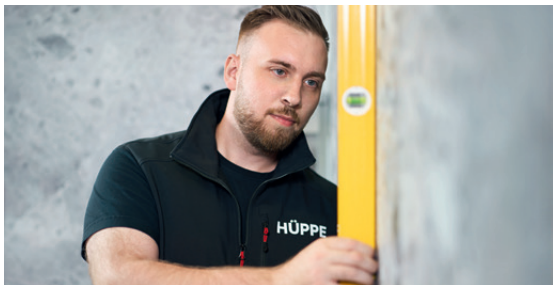


# SERVICE

**More support ...**  
From advice during the planning stage to final installation, our goal is to take as much of the work out of your project as possible by providing a comprehensive service for your shower enclosure and helping you to achieve your goals. Just as you would expect from a true project partner.



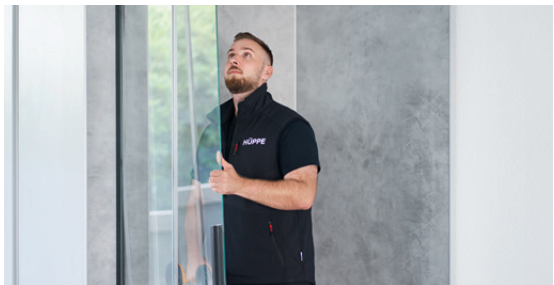
**Advice. At eye level**  
Our experienced and technically skilled service team is on hand to offer advice and assistance even before you put out a tender for shower products for your project. This is because the structural situation plays a key role in determining which products from our range are the ideal solution for your building project. We will, of course, provide you with all the information you need to draw up a list of requirements and issue a tender.



**Measurements. Accurate to the millimetre**  
As soon as we receive your order, we will arrange with you to take measurements on site at the construction site. Absolute precision and accuracy are essential here. That is why only experienced HÜPPE shower enclosure experts or technicians who have been thoroughly trained by HÜPPE take the measurements. If HÜPPE Sphere is the solution of choice for your project, this intermediate step is not necessary in most cases, as the frame profile offers a generous adjustment range of up to six or eight centimetres.



**Logistics. Just in time**  
Your HÜPPE products will only arrive at the construction site once we have agreed with you that we can begin installation. This means that they won't be lying around in the way, but will be installed quickly. It goes without saying that we take care of all the logistics - including on site at the construction site. Our service also includes the removal and professional disposal of all waste generated by our work.



**Installation. According to your specifications**  
Your priorities and the order of construction approval determine the sequence of installation of our products by HÜPPE technicians or by our comprehensively trained specialist partners. We only work in the construction areas that we have agreed with you in advance. Once the work has been completed, we draw up a detailed report for each individual installation of a HÜPPE product, including photos of the installation situation, which we then go through with you point by point. This ensures that everything has been carried out to your complete satisfaction.



... even after the project has been completed

Our service for you does not end once we have completed our work and left the construction site. Because we naturally want you and your customers to enjoy our products for many years to come.

All the information you need about HÜPPE Sphere for your planning can be found online at [www.hueppe.com/en/new-era](http://www.hueppe.com/en/new-era)



**Support. For the entire product life cycle**

Our after-sales service means that HÜPPE will:

- train and advise your facility management team on your project as required,
- carry out maintenance work such as re-lubricating the hinges on our HÜPPE shower enclosures,
- provide cleaning agents specially developed for HÜPPE surfaces,
- offer a ten-year availability guarantee\* for all wear parts in our products,
- operate our own online shop where you can order spare parts around the clock from anywhere in the world,
- take care of your concerns with professional complaint management should you ever have any complaints.

**Your personal advisory service**

We are also happy to provide you with personal support for your construction project. Our HÜPPE project team is on hand to offer expert advice on our products and solutions and to assist you with technical questions and construction challenges. You can also count on our help with tenders. Feel free to contact us or make an appointment for a consultation online at [www.hueppe.com/en/new-era](http://www.hueppe.com/en/new-era)

**HÜPPE Project Team**

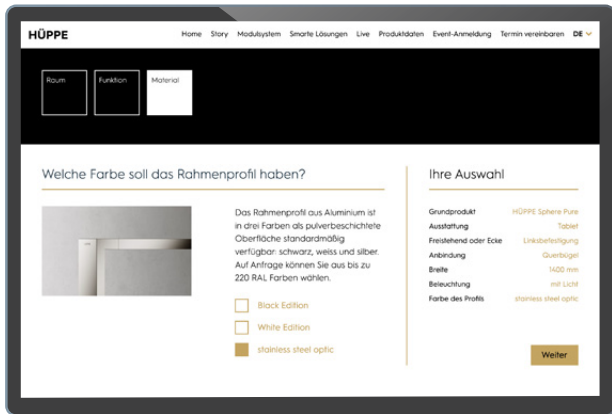
**E-mail:** [objekt@hueppe.com](mailto:objekt@hueppe.com),

**Tel.:** +49 (0) 4403 67-520



Spare parts can be easily ordered online via our HÜPPE shop at [shop.hueppe.com/en](http://shop.hueppe.com/en)





Configure your own shower area in just a few steps –  
including a no-obligation price quote.

[www.hueppe.com/en/new-era/configurator](http://www.hueppe.com/en/new-era/configurator)



Always stay up to date  
and follow us on Instagram,  
LinkedIn and Pinterest



## HÜPPE GmbH

Industriestraße 3  
26160 Bad Zwischenahn  
Germany  
Tel.: +49 (0)4403 67-0  
E-Mail: [hueppe@hueppe.com](mailto:hueppe@hueppe.com)

[www.hueppe.com](http://www.hueppe.com)

# HÜPPE